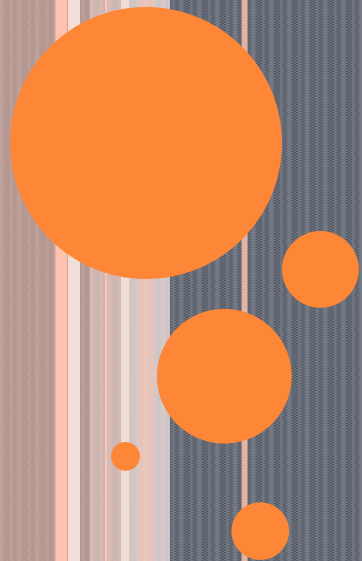


PRACTICAL OBSTETRICS

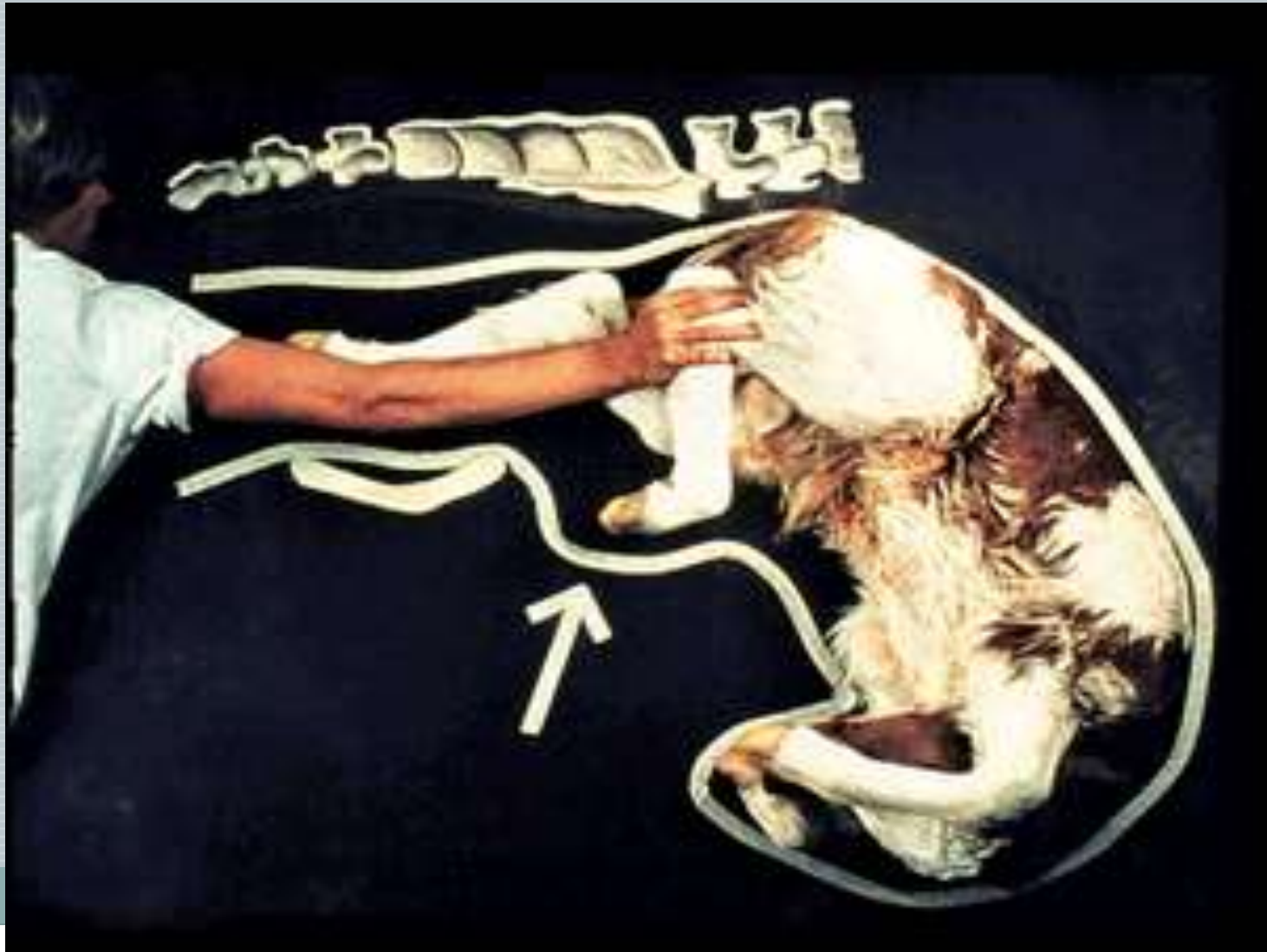
Obstetrical maneuvers

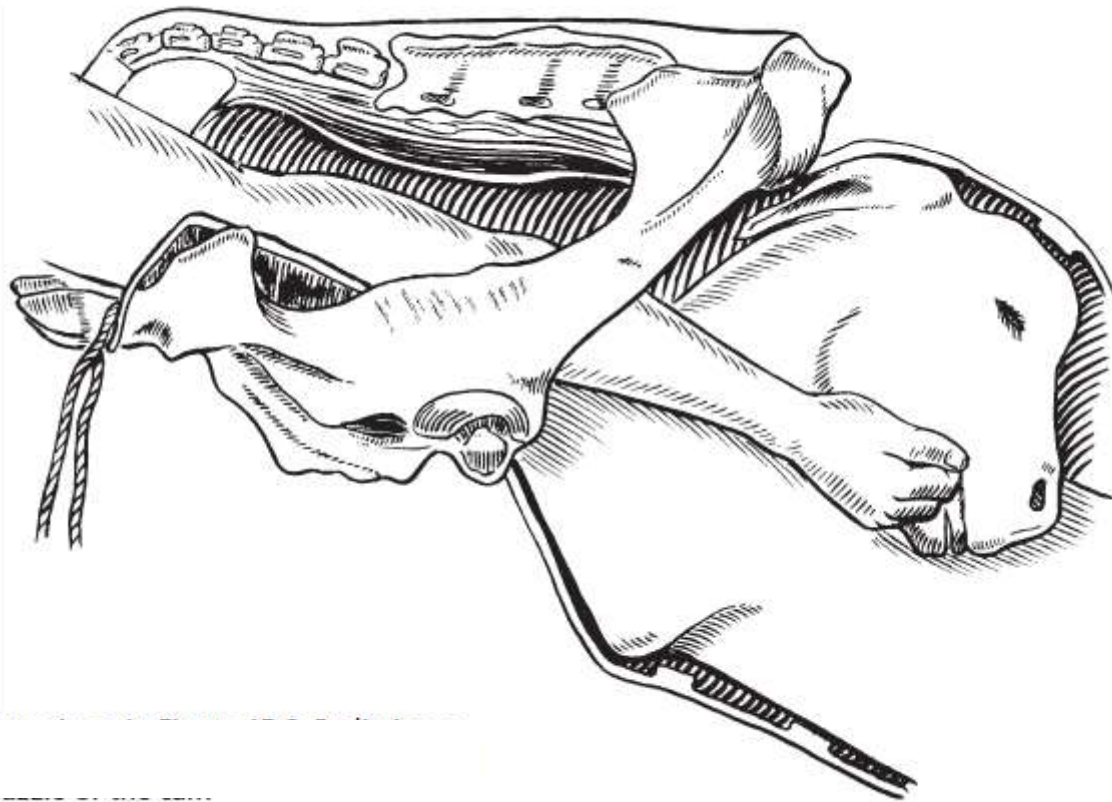
Dr. Yaseen M.

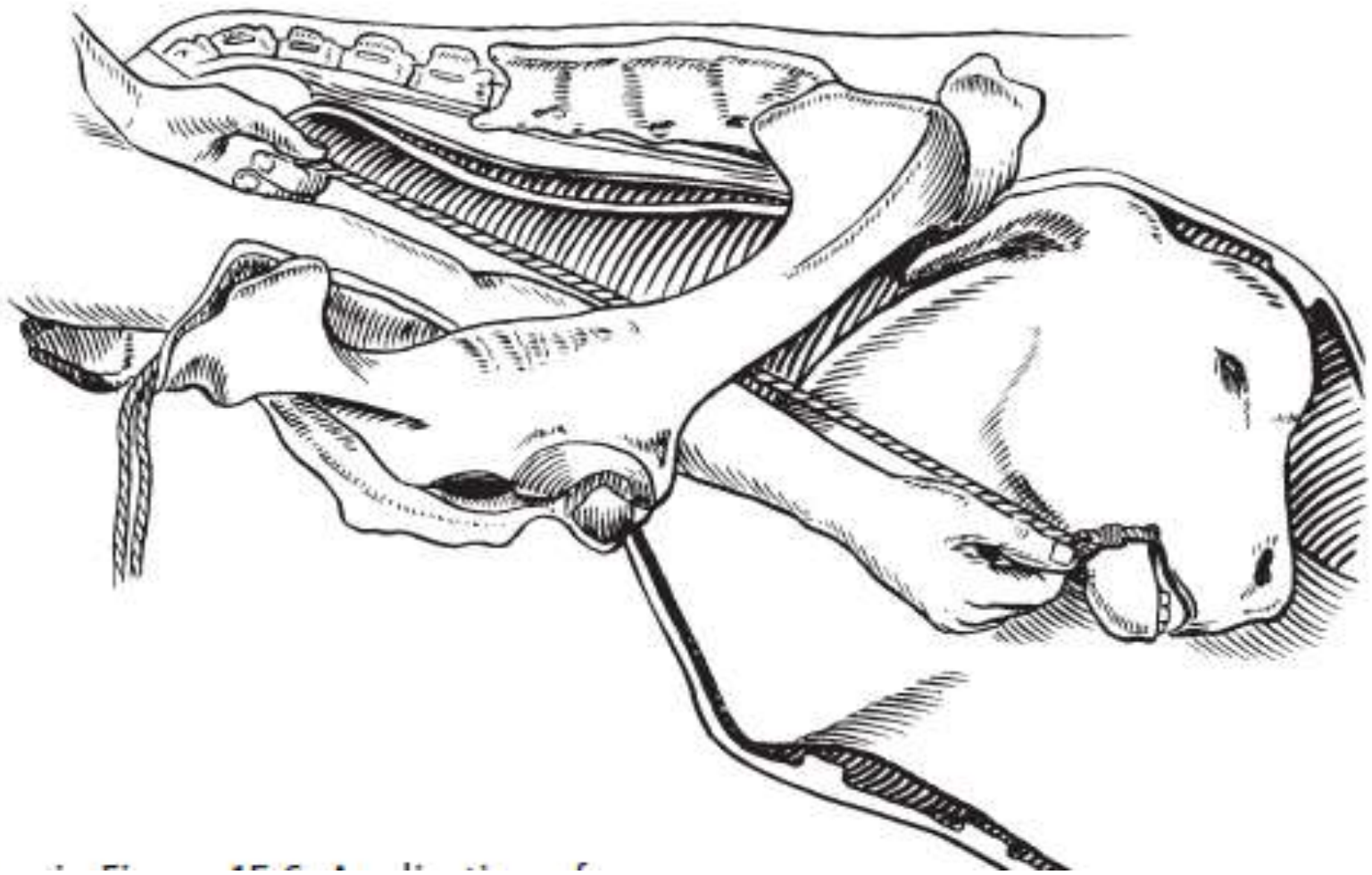


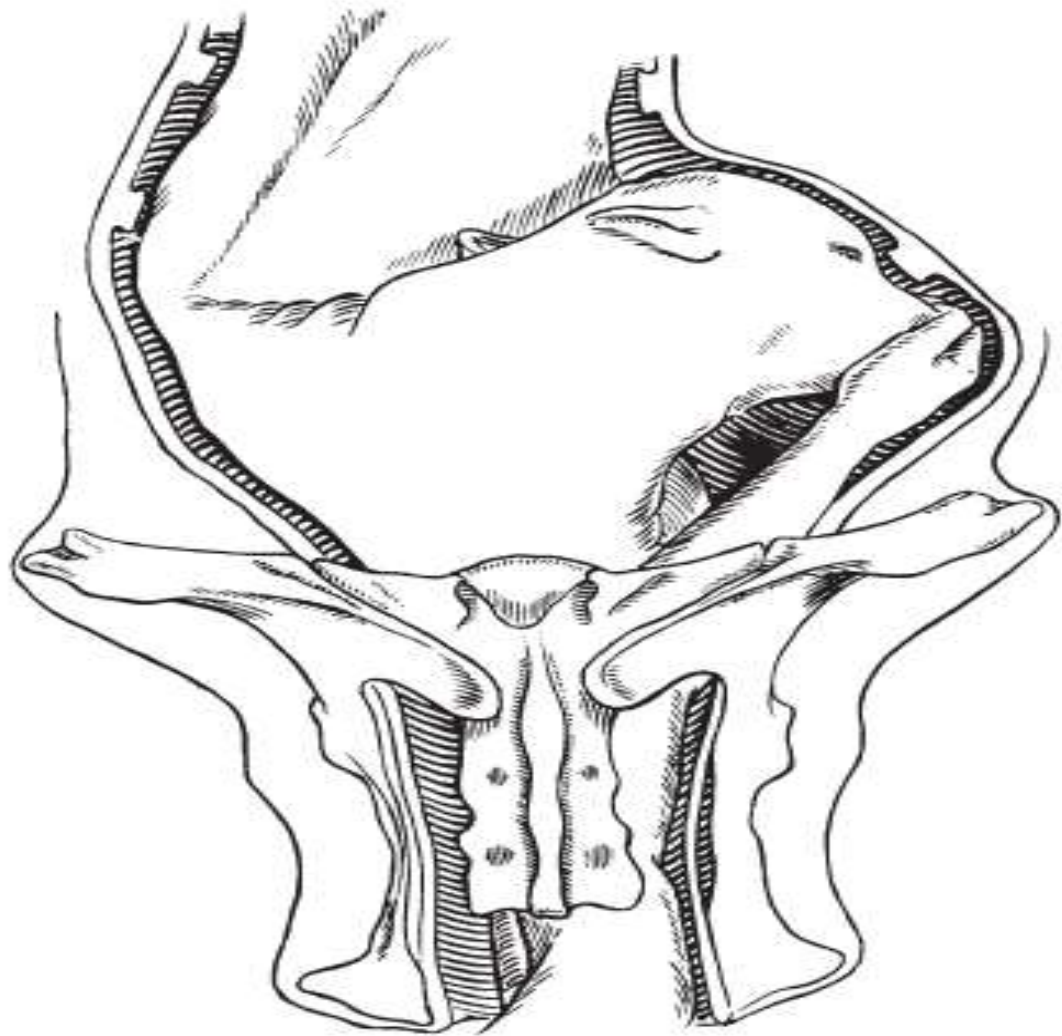


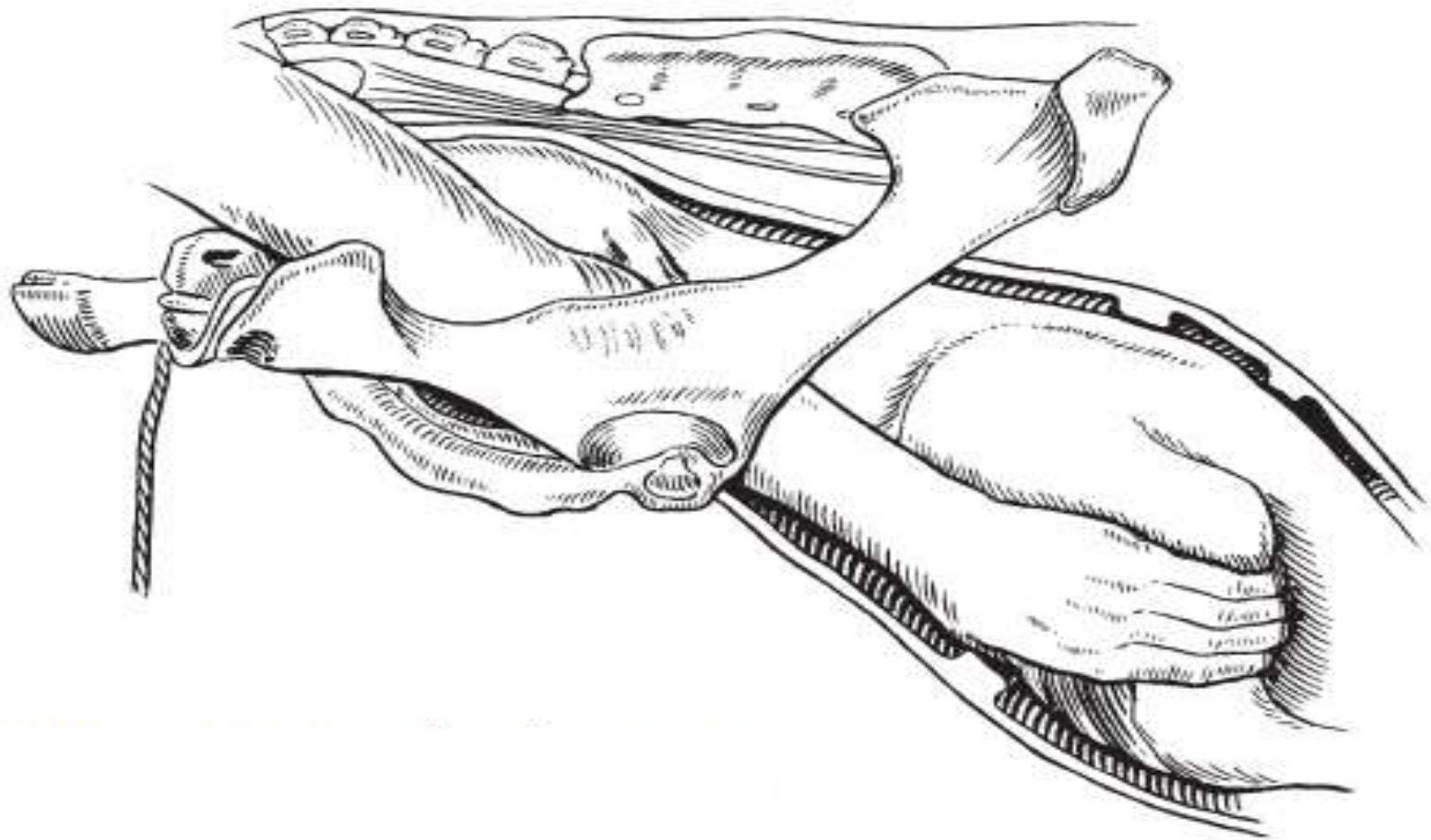
Retropulsion: mean pushing the fetus cranially from the vagina towards the uterus.

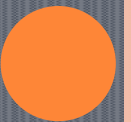
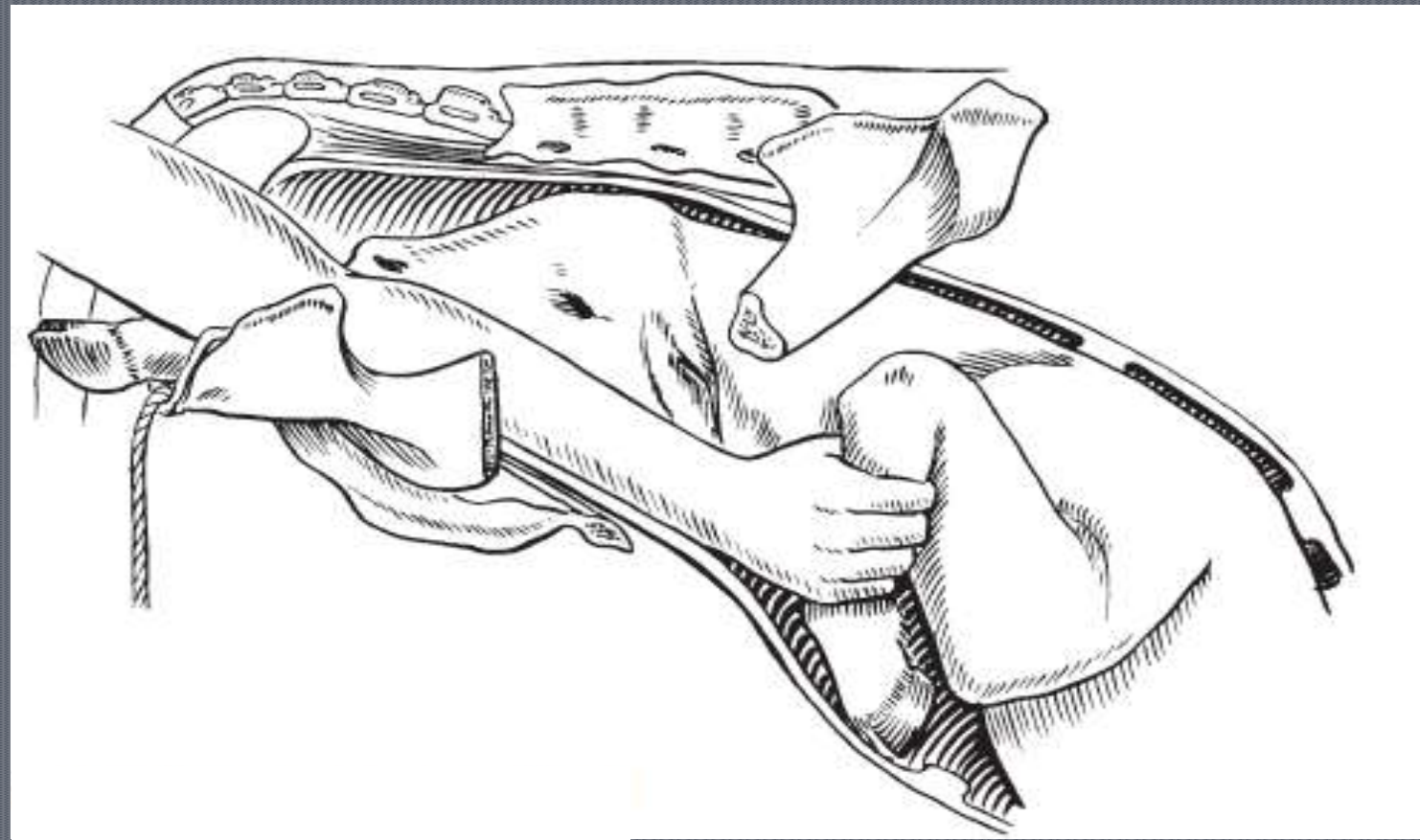




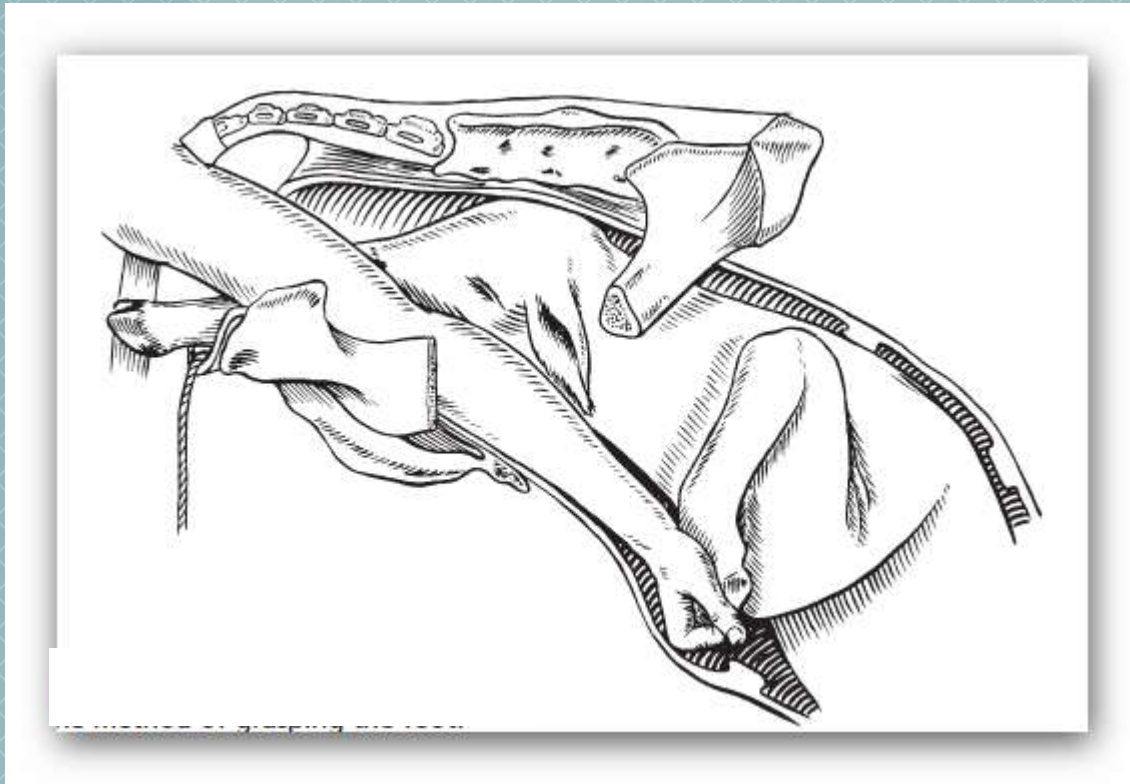


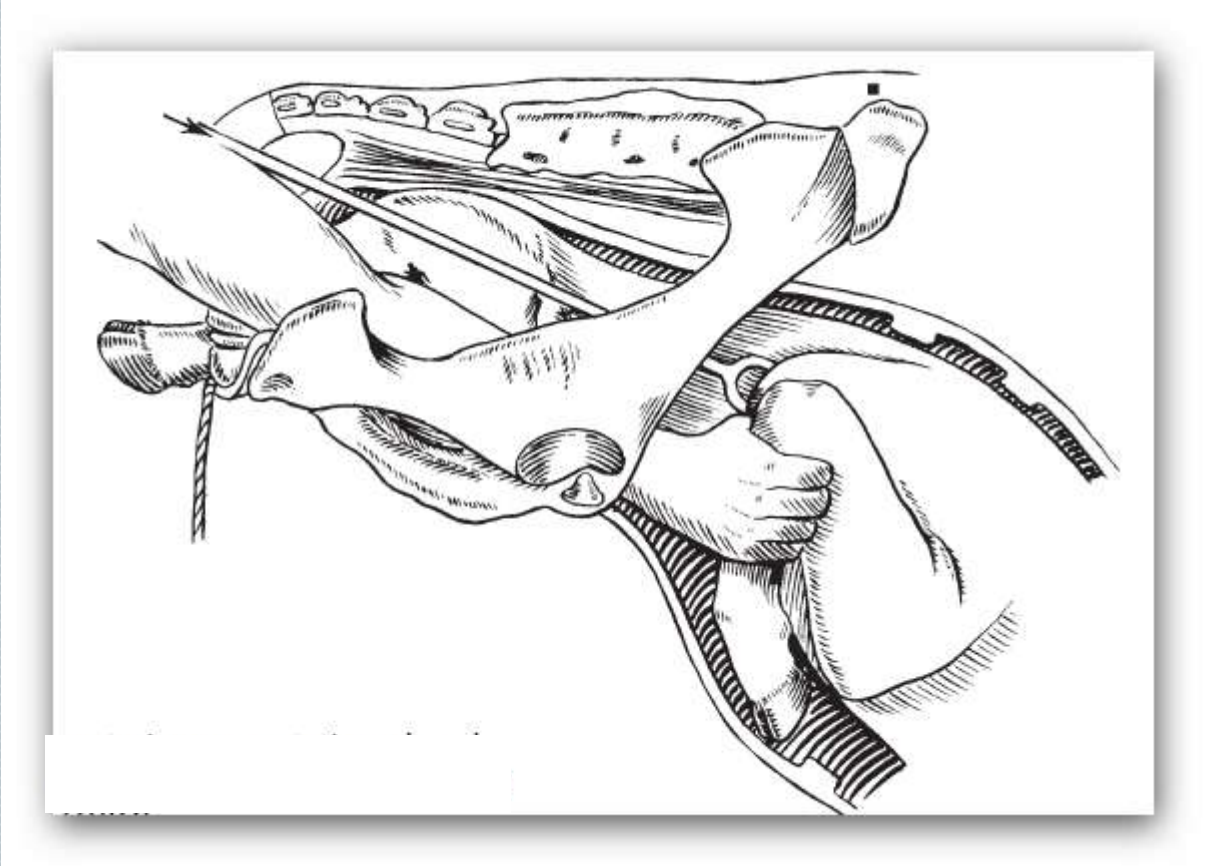


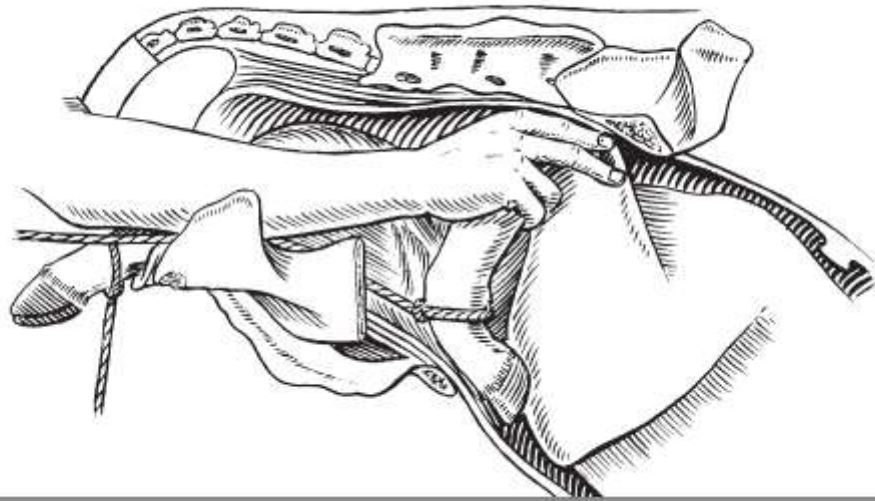




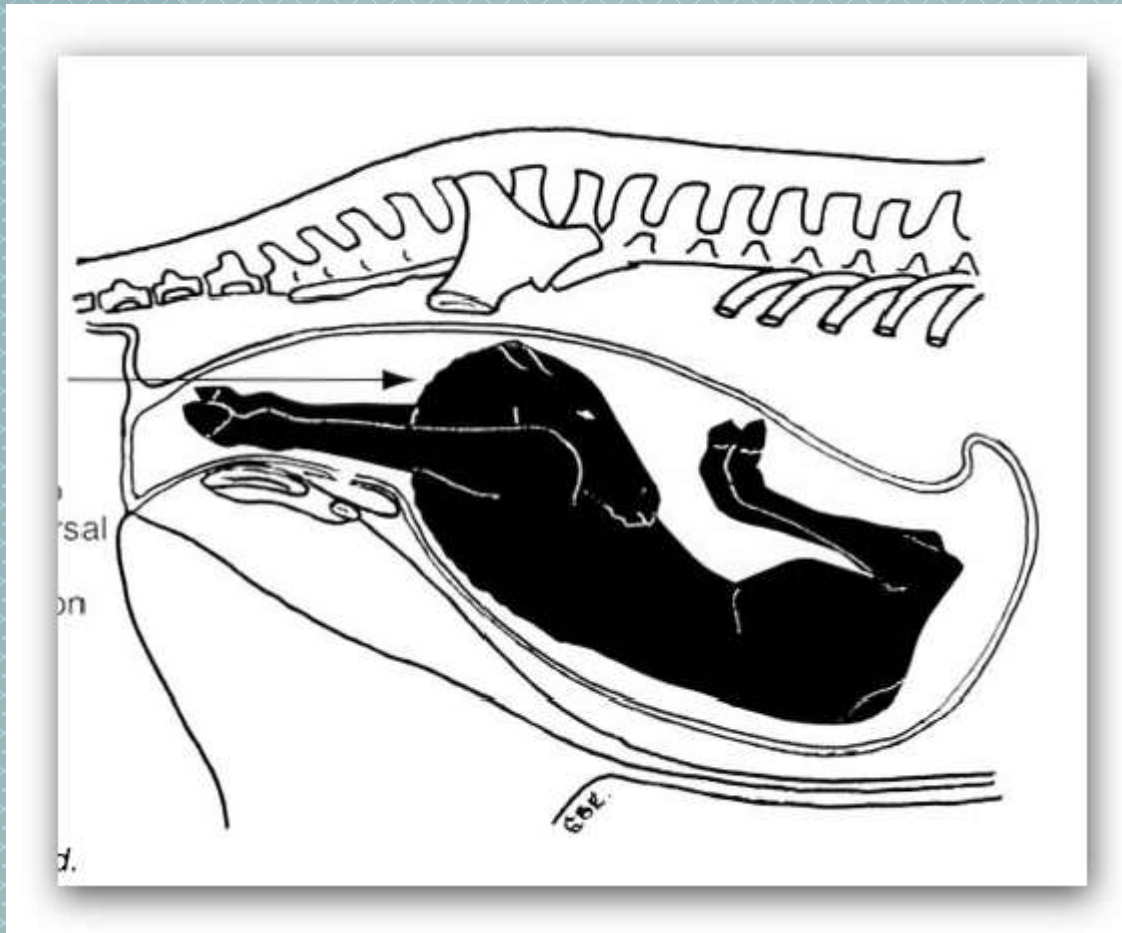
Extension: refer to extension of flexed joints when postural defect are present.



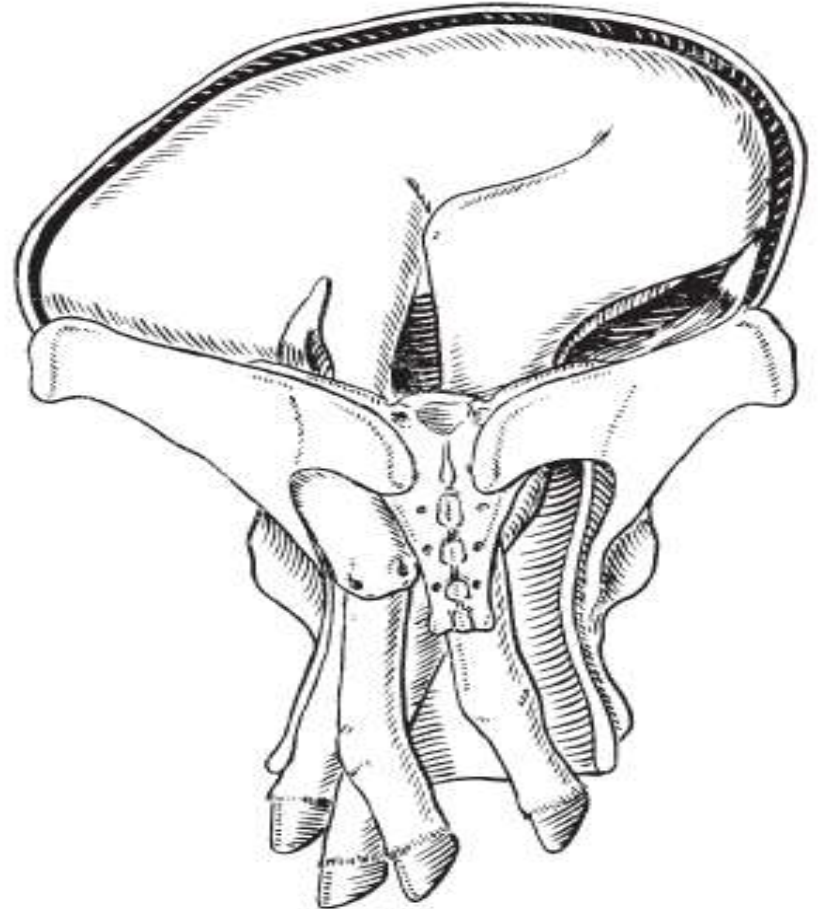
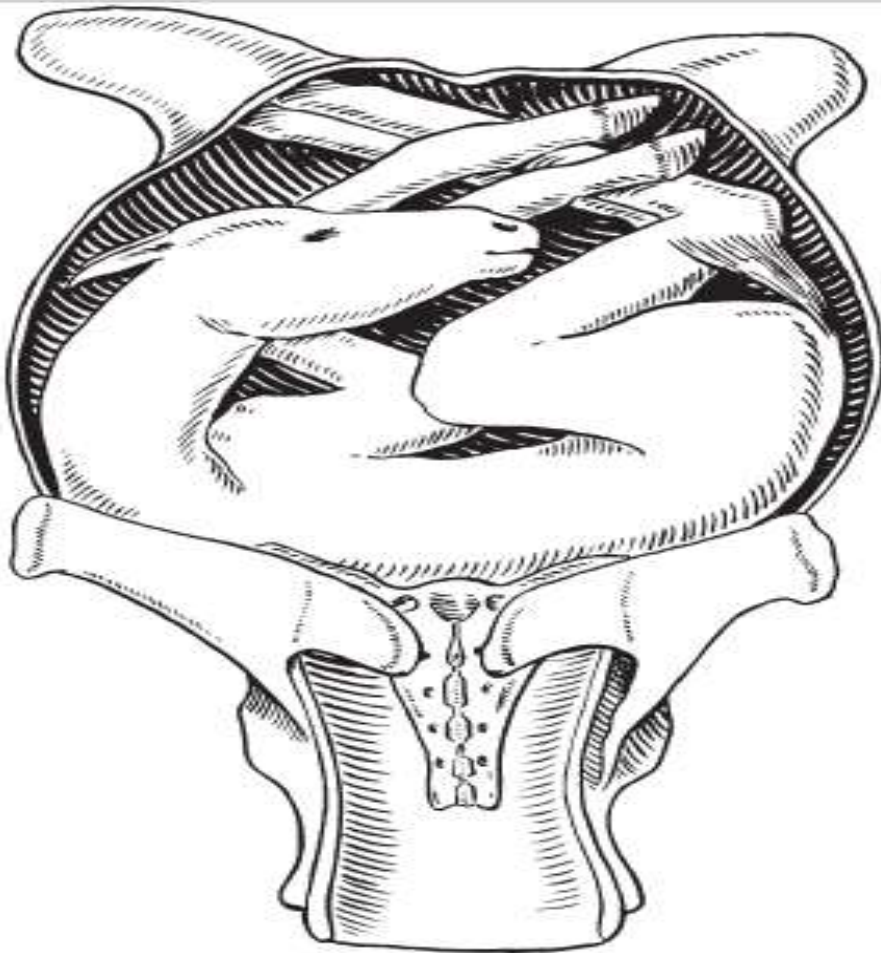




- **Rotation**: alteration of the position of a fetus by moving it around its longitudinal axes.



Version: alteration of transverse or vertical to longitudinal presentation.

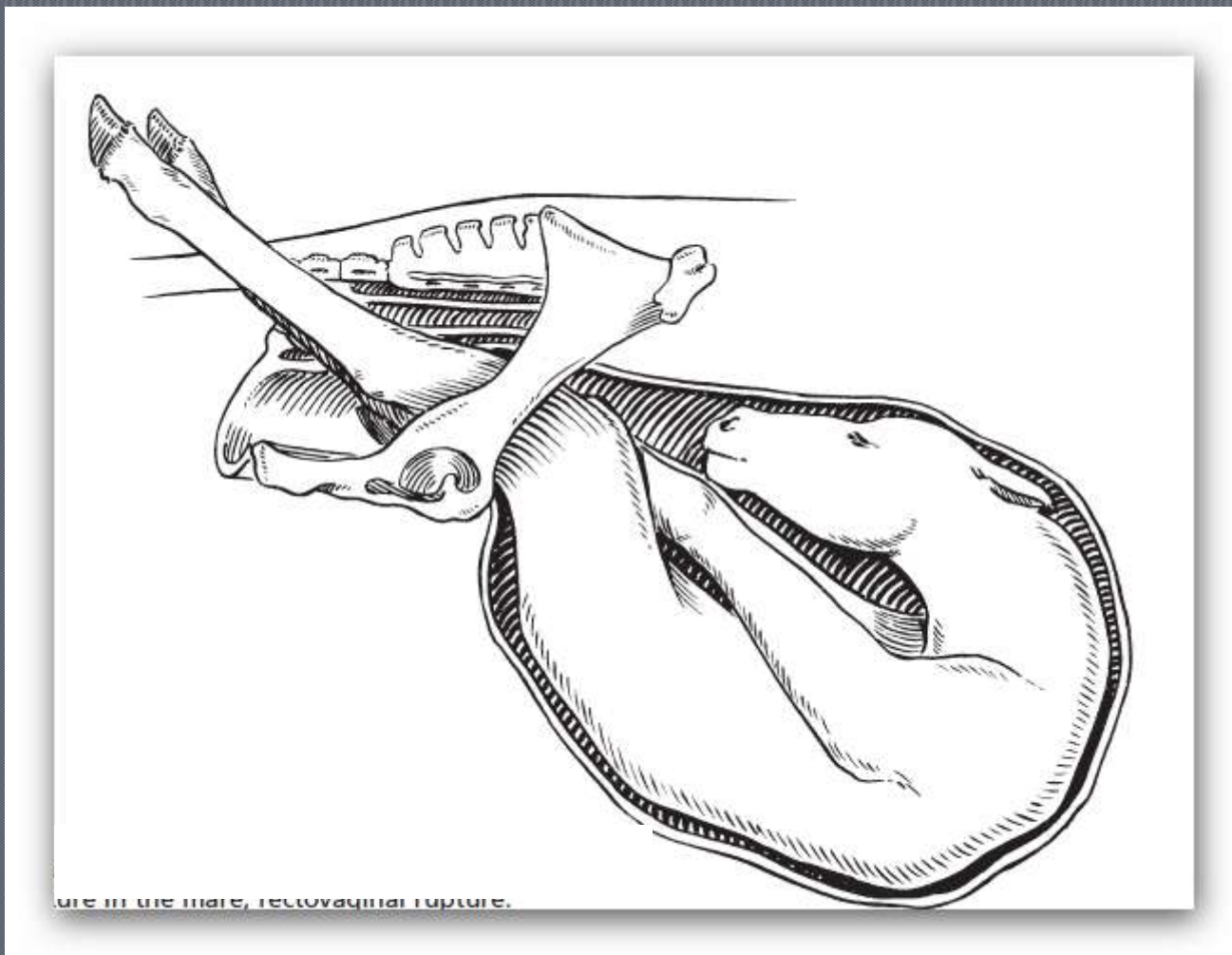


Traction: means the application of force to the presenting parts of the fetus in order to supplement.









Posterior presentation ,ventral position, bilateral hind-limbs extended

